



# PROJECT ZEUS

Kentucky Cabinet for Economic Development

Commissioner Kristina Slattery

Senior Project Manager Malcolm Jollie

# CENTRALLY LOCATED



- Kentucky is located **within a day's drive** of 2/3 of the U.S. population
- **3 global air cargo hubs** by UPS, DHL and Amazon can ship products nearly anywhere in the world overnight
- Kentucky manufacturers can quickly distribute across the **U.S. East Coast, South and Midwest**

# KENTUCKY'S TOP INDUSTRY SECTORS

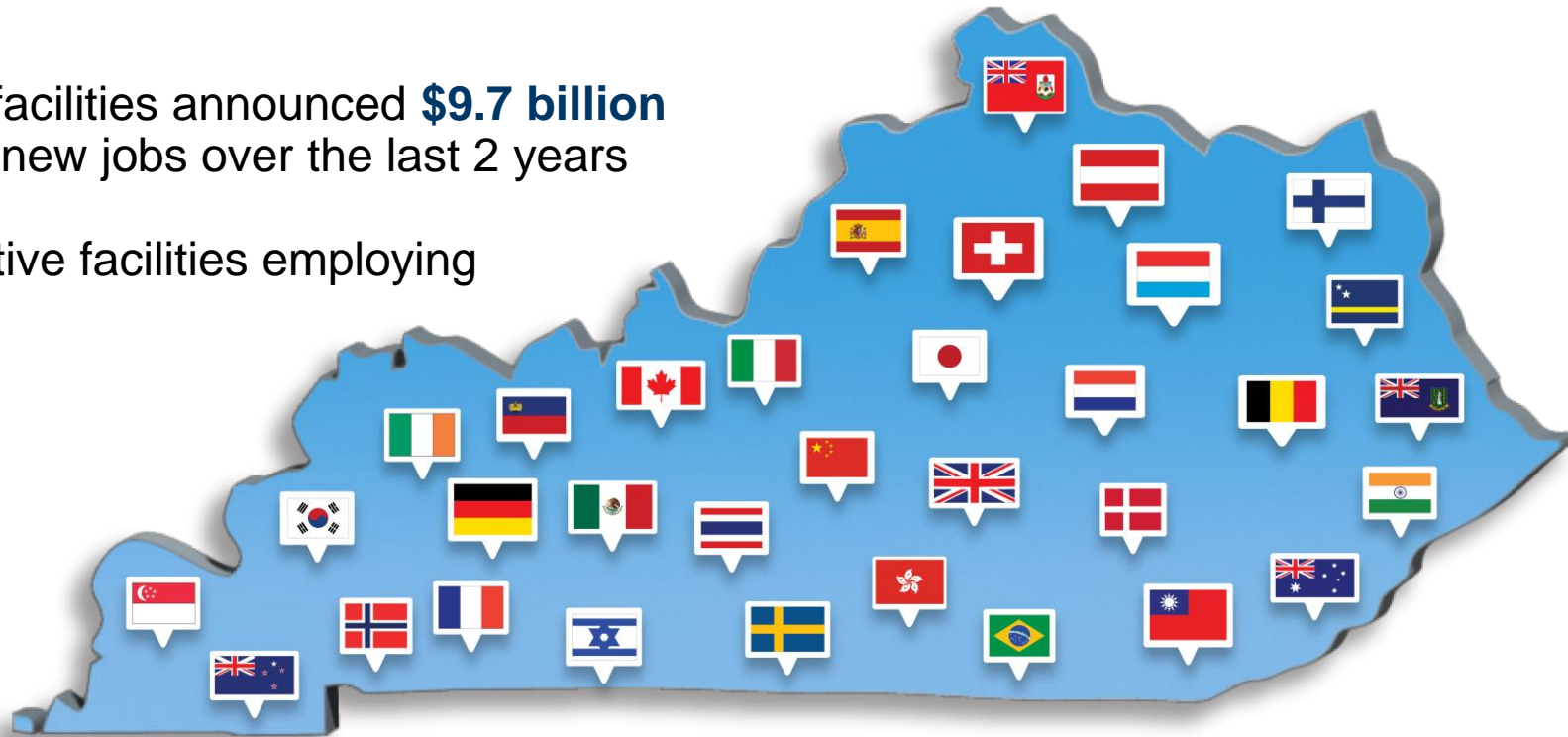
<b>INDUSTRY</b>	<b>FACILITIES</b>	<b>EMPLOYEES</b>
Automotive	560	102,300
Food & Beverage	420	56,600
Aerospace	106	23,300
Primary Metals	240	26,500
Chemicals	240	16,700
Distribution & Logistics	610	90,100
Plastics & Rubber	260	31,100
Healthcare	230	36,000

*As of 4/25/2023\**



# INTERNATIONAL INVESTMENT

- ✓ **530+** internationally owned facilities employing more than **114,000** workers
- ✓ **33 nations**
- ✓ **5<sup>th</sup> nationally** in percentage of workers employed by an international company
- ✓ Internationally-owned automotive facilities announced **\$9.7 billion** investment and more than **10,600** new jobs over the last 2 years
- ✓ **217** internationally-owned automotive facilities employing more than 58,000 workers





# GERMAN OWNED FACILITIES LOCATED IN KENTUCKY



OVER 80 GERMAN FACILITIES EMPLOY 15,000+ WORKERS

**wieland**

## WIELAND

Wieland North America, Inc.  
Shelbyville

Manufacturer of semi-finished products in copper and copper alloys



## DHL EXPRESS

DHL Express (USA), Inc.  
Erlanger

Airfreight delivery service, international hub distribution facility

**Mubea**

## MUBEA

Mubea, Inc.  
Florence

Manufacturer of automotive component parts (stabilizer bars)



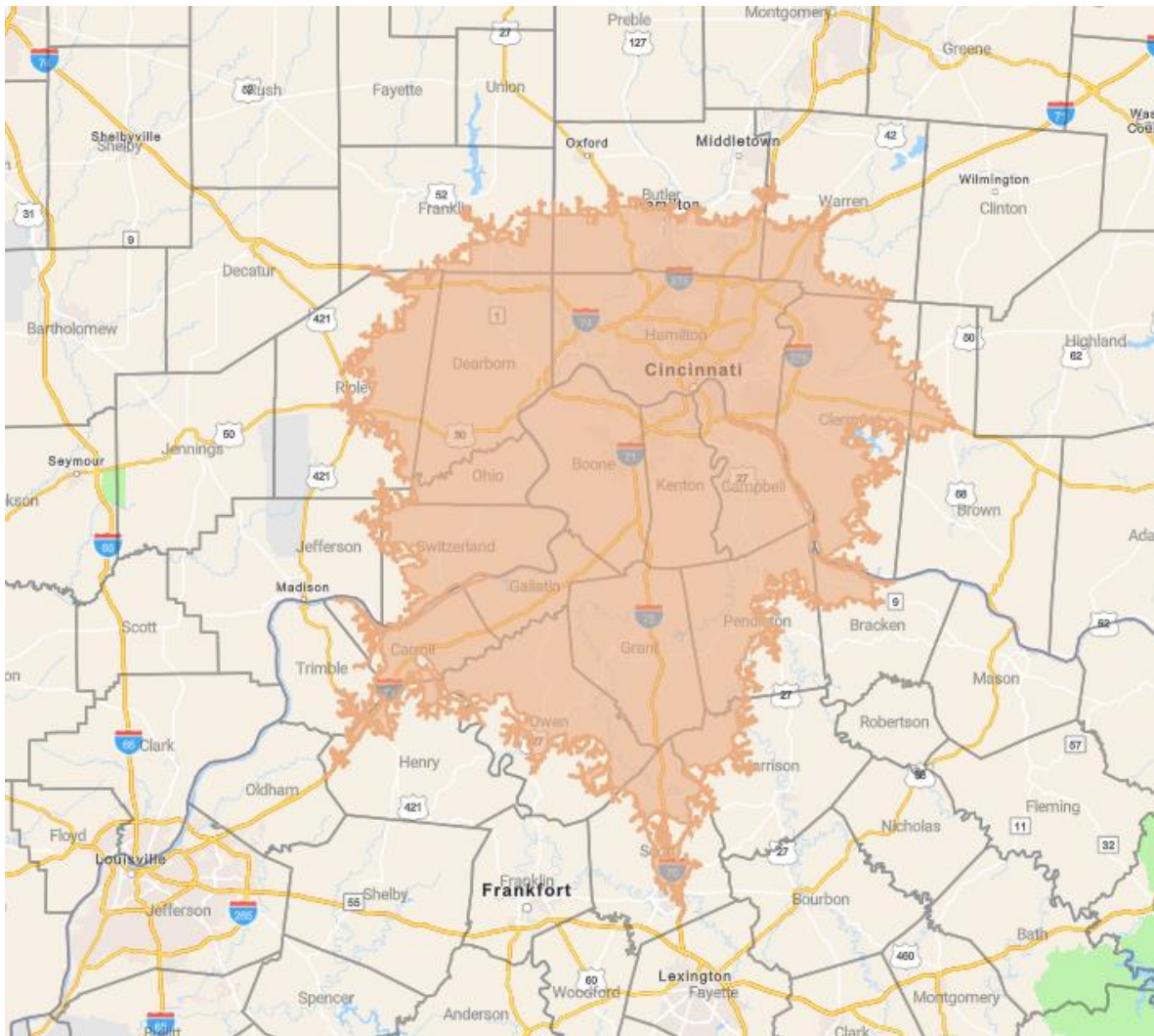
## WEBASTO

Webasto Roof Systems, Inc.  
Lexington

Manufacturer of automotive sunroofs

# BOONE COUNTY, KY

## 60-Minute Drive Time



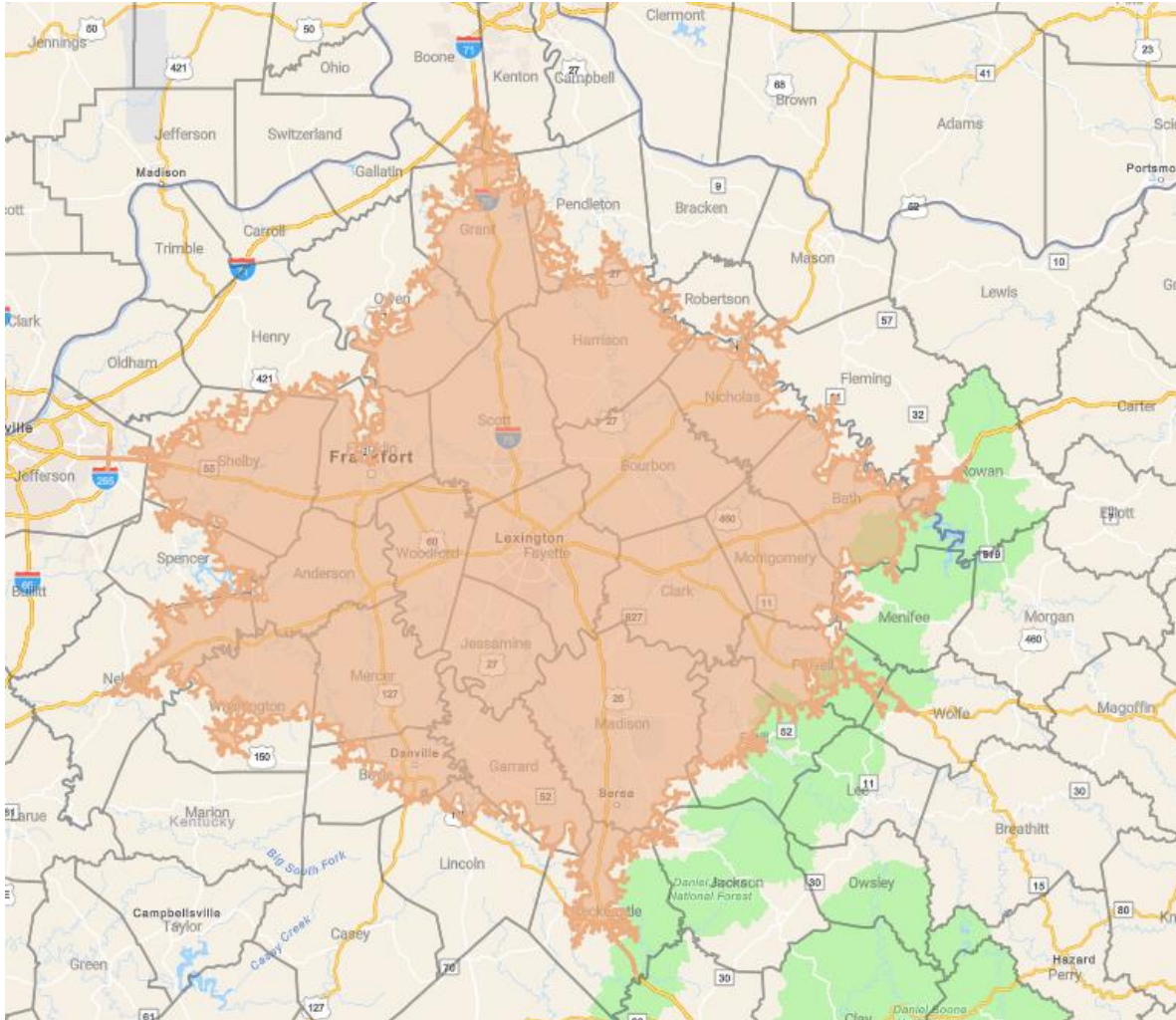
- Population: 2,270,331
- Labor Force: 1,182,348
- Labor Force Participation Rate: 65.7%
- Labor Force with Bachelor degree or higher: 36.0%
- Average Commute Time: 25.1 minutes
- Unemployment Rate: 3.4%

SOC Code	Occupation	Workforce	Median Hourly Wage
17-2071	Electrical Engineers	1,540	\$48.69
17-3023	Electrical and Electronic Engineering Technologists and Technicians	477	\$31.44
49-2090	Miscellaneous Electrical and Electronic Equipment Mechanics, Installers, and Repairers	1,661	\$27.94
51-2020	Electrical, Electronics, and Electromechanical Assemblers	2,246	\$19.06

Source: JobsEQ

# FAYETTE COUNTY, KY

## 60-Minute Drive Time



- Population: 1,229,370
- Labor Force: 617,370
- Labor Force Participation Rate: 62.7%
- Labor Force with Bachelor degree or higher: 33.1%
- Average Commute Time: 24.1 minutes
- Unemployment Rate: 3.4%

SOC Code	Occupation	Workforce	Median Hourly Wage
17-2071	Electrical Engineers	620	\$48.75
17-3023	Electrical and Electronic Engineering Technologists and Technicians	340	\$26.14
49-2090	Miscellaneous Electrical and Electronic Equipment Mechanics, Installers, and Repairers	721	\$27.39
51-2020	Electrical, Electronics, and Electromechanical Assemblers	1,084	\$18.41

Source: JobsEQ

# HIGHER EDUCATION IN KENTUCKY



-  4 Yr Public University
-  4 Yr Private University
-  eKAMI Locations
-  KCTCS Locations
-  Area Technology Center (ATC)
-  Career Technical Center (CTC)

## Enrollment

8 Public Universities: 126,826 students

18 Private, Non-Profit Colleges and Universities: 44,489 students

16 Community and Technical Colleges with more than 70 campus locations: 77,680 students

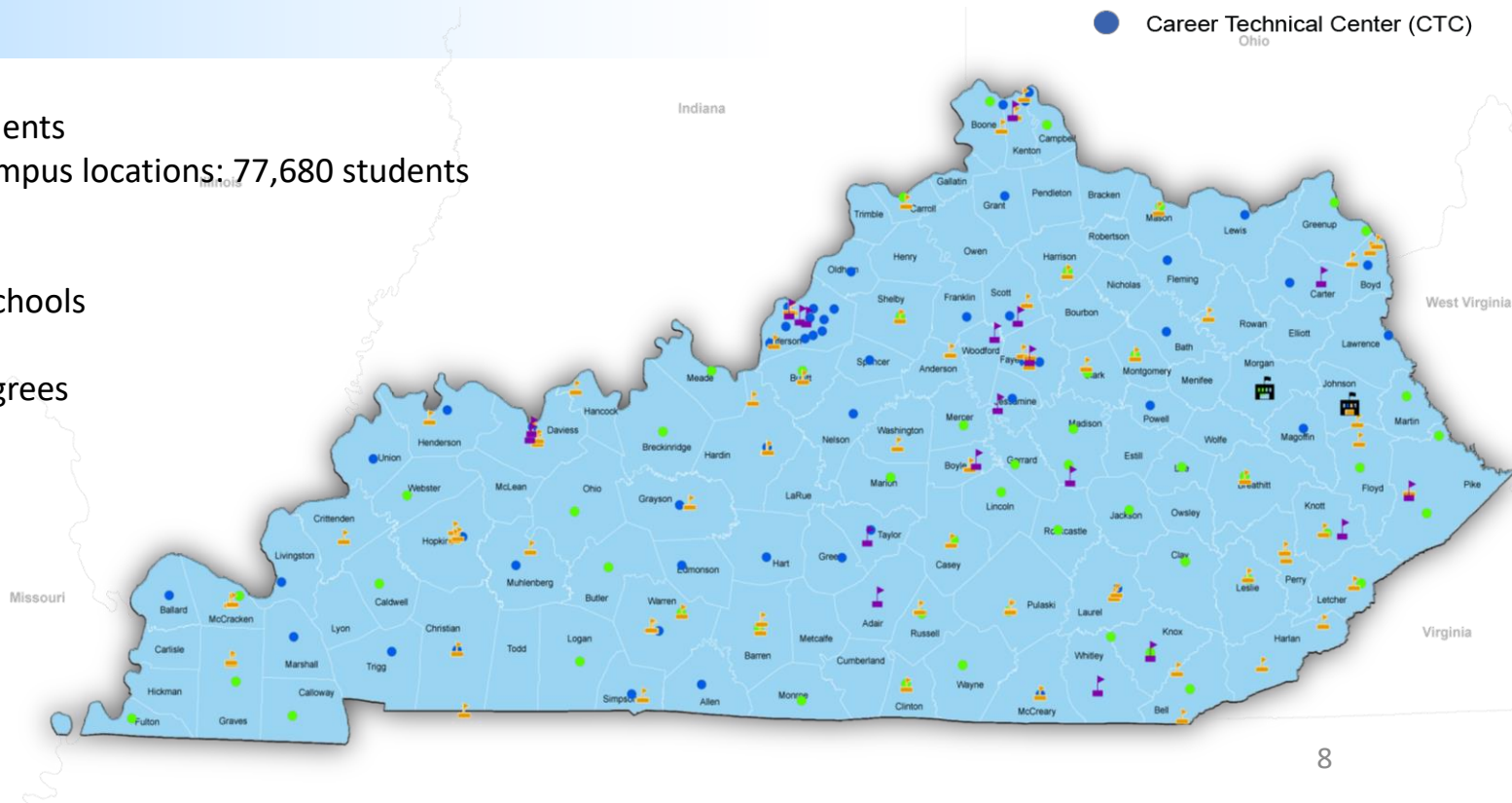
70+ Career and Technical High Schools

\$100M+ being invested in Kentucky's career and technical schools

3,600 Engineering and Engineering-related Technologies degrees awarded at postsecondary institutions during the 2021-2022 academic year

Conn Center for Renewable Energy Research  
(University of Louisville)

Center for Applied Energy Research  
(University of Kentucky)





# TAX INCENTIVE PROGRAMS

ALL ARE PERFORMANCE-BASED



Tax  
Increment  
Financing  
(TIF)



Kentucky  
Angel  
Investment  
Tax Credit  
(KAITC)



Kentucky  
Reinvestment  
Act (KRA)




Kentucky  
Investment  
Fund Act  
(KIFA)



Kentucky  
Business  
Investment  
(KBI)

Kentucky  
Entertainment  
Incentive  
(KEI) Program




Kentucky  
Jobs  
Retention  
Act (KJRA)


Kentucky  
Small  
Business  
Tax Credit  
(KSBTC)



Kentucky  
Enterprise  
Initiative Act  
(KEIA)



Kentucky  
Selling Farmer  
Tax Credit  
(KSFTC)



Incentives  
for Energy-  
Related  
Business  
Act (IEBA)