



Kentucky's Bluegrass Region



# Biotech is Booming in the Bluegrass.

## BIOTECH INDUSTRY HIGHLIGHTS

**\$450 million** – University of Kentucky (UK) annual Research & Development expenditures

**Within 75 miles** of a UPS cold storage facility and overnight worldwide delivery

**Coldstream Research Campus** – UK's live, work, play and innovate campus. Home to over 50 businesses, including incubators

## In Good Company

**More than 100 biotech companies, including these bio-tech leaders, call Greater Lexington home:**

**Alltech** features a diverse portfolio of products and services that improve the health and performance of plants and animals. Headquartered in Greater Lexington, Alltech is an industry leader in innovation, with five bioscience centers and over 75 manufacturing operations across the globe.

**Neogen Corporation**, a global animal and food safety company, located its animal safety headquarters in Lexington, where they utilize technologies from research based at the University of Kentucky.

**MosquitoMate Inc.**, a worldwide innovator in environmentally friendly mosquito control that was founded through intellectual property developed at the University of Kentucky.



For a full list of biotech companies in the Greater Lexington Region, scan the QR Code.

**From biotechnology to direct patient care, the Greater Lexington region is a hub for the life sciences industry, featuring:**

A culture of innovation and commercialization

A highly educated workforce

Top-ranked research programs at the University of Kentucky

12 post-secondary educational institutions that offer a variety of programs and technical certificates

An expansive network of medical centers, employing more than 22,000 people

University of Kentucky's Markey Cancer Center, designated a National Cancer Institute Comprehensive Cancer Center

The largest pharmacy and education research building in the world on University of Kentucky's campus

Significant state, local and private funding opportunities, including Kentucky's SBIR/STTR Match Program

## SUCCESS STORY

Kindeva Drug Delivery's Lexington expansion was a strategic decision driven by the region's robust support of the biotech sector, combined with access to top-tier research institutions. The resulting strategic partnerships fuel Kindeva's ability to deliver cutting-edge solutions from ideation through commercialization. Lexington's collaborative business environment and advanced infrastructure empowers Kindeva to thrive and continue our global impact in drug delivery. We are excited about our growth and future in the Greater Lexington region.



**Milton Boyer**  
Chief Executive Officer  
Kindeva Drug Delivery  
[kindevadd.com](http://kindevadd.com)






## EDUCATED WORKFORCE

**Over 2,500 degrees awarded annually in STEM programs**

—Kentucky Center for Postsecondary Education, 2022-2023 Awards

Learn more at [locateinlex.com](http://locateinlex.com)

## Logistics

-  Connected to more than **2/3rd of population** via I-64 and I-75
-  **389** destinations within one stop of LEX
-  **100+ daily flights** from within an hour using LEX, CVG, and SDF
-  Lexington's UPS Ground Hub delivers to **90% of U.S. zip codes** within 3 days
-  Within **75 miles** of a UPS cold storage facility and overnight worldwide delivery



### Did you know?

Space Tango, headquartered in Lexington, Kentucky, conducts experiments in space to advance health research. They leverage microgravity to develop innovative solutions for healthcare challenges on Earth.

## Employment and Average Annual Wage for Biotech

**1,852** Employment | **\$107,500** Average Annual Wage

Source: JobsEQ, Data as of 2023Q3

## Cost of Living

MSA	COLI	Average Annual Salary	Purchasing Power
Lexington	92.0	\$60,676	\$65,953
Raleigh-Durham	98.3	\$70,260	\$71,475
Philadelphia	107.8	\$74,389	\$69,004
Chicago	111.1	\$75,925	\$68,336
Seattle	130.6	\$104,600	\$80,102
Boston	138.1	\$96,334	\$69,757
NYC	142.1	\$92,879	\$65,380
Washington, D.C.	143.2	\$92,320	\$64,470
Los Angeles	150.7	\$78,588	\$52,143
San Francisco	151.4	\$125,098	\$82,615



Scan the QR Code to view available sites and buildings at the **Greater Lexington Property Database**.



The University of Kentucky's **Coldstream Research Campus** is home to more than 50 organizations and more than 2,250 employees working in biotechnology, pharmaceuticals, equine health, and other industry sectors. Coldstream has additional land available for future.

## Postsecondary STEM Programs

AWARDS

### University of Kentucky

Engineering	687
Biological & Biomedical Sciences	458
Computer & Information Sciences	258
Mathematics & Statistics	140
Physical Sciences	127

### Bluegrass Community & Technical College

Computer & Information Sciences	477
Engineering Technologies/Technicians	153
Biology/Biotechnology Technology/Technician	20

### Eastern Kentucky University

Engineering Technologies/Technicians	181
Biological & Biomedical Sciences	93

**7,400+** Enrollment in biological and biomedical science programs across Kentucky.

Source: Kentucky Center for Postsecondary Education, 2023-2024



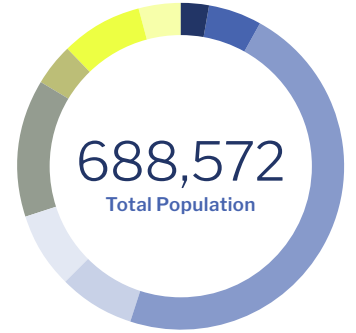
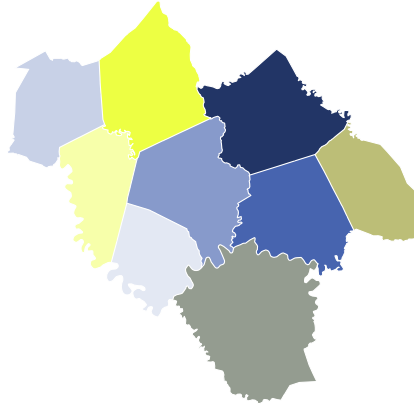
Kentucky's Bluegrass Region

# Greater Lexington Snapshot

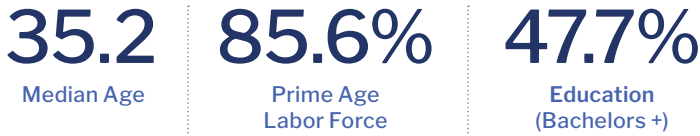
## GREATER LEXINGTON REGION POPULATION

### County

■ Bourbon	20,228
■ Clark	36,897
■ Fayette	321,276
■ Franklin	51,475
■ Jessamine	53,381
■ Madison	92,955
■ Montgomery	28,188
■ Scott	57,286
■ Woodford	26,886
<b>Region</b>	<b>688,572</b>



## EDUCATED WORKFORCE



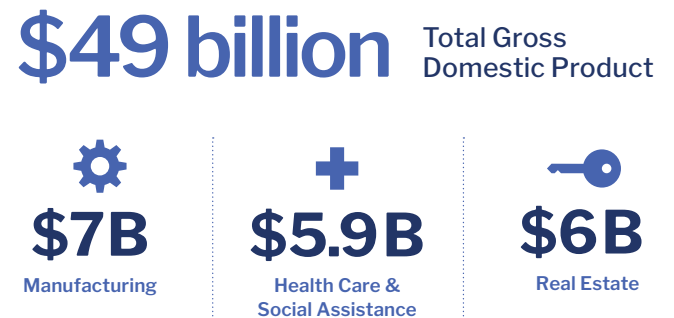
## INDUSTRY SECTORS



## EMPLOYMENT NUMBERS



## GROSS DOMESTIC PRODUCT



## HOUSING MARKET



Source: JobsEQ, American Community Survey 2018-2022



Economic Development  
330 East Main Street, Suite 205  
Lexington, KY 40507

**Gina Greathouse**  
Executive Vice President,  
Economic Development  
859-226-1623  
ggreathouse@commercelexington.com

**Niki Goldey**  
Director of New Business,  
Economic Development  
859-226-1622  
ngoldey@commercelexington.com

