



Kentucky's  
Bluegrass Region

# Harnessing Our Horsepower

## ADVANCED MANUFACTURING HIGHLIGHTS

Toyota's largest vehicle manufacturing plant in the world is located in the Greater LEX region.

There are more than 700 manufacturing facilities across the Greater LEX region.

Kentucky's metals industry includes more than 250 facilities that employ more than 36,000 people.

## In Good Company

More than 450 global and national advanced manufacturing companies call Greater LEX home.

**Toyota Motor Manufacturing** invested in Georgetown in the mid 80's. Their presence here attracts hundreds of automotive suppliers, generating continued economic growth of the automotive supply chain.

**Tiffany & Co.** opened its first manufacturing plant outside the northeast U.S. in Lexington. Their manufacturing facility employs in-house artisans that produce their classic six-prong engagement rings and other fine jewelry pieces.

**Link-Belt Cranes**, headquartered in Lexington, is a leader in the design and manufacture of telescopic and lattice boom cranes for the construction industry worldwide.



To view more Advanced Manufacturing companies in the Greater LEX region, scan the QR code.

An educated workforce and lower business costs make Kentucky and Greater LEX an ideal location for advanced manufacturing.

KY FAME, a partnership of regional manufacturers, offers apprenticeship-style education programs through Bluegrass Community and Technical College creating a pipeline of highly skilled workers.

Eastern Kentucky University offers a Manufacturing Engineering Program with an emphasis on quality and lean manufacturing.

True Lean Systems Program, a partnership formed in 1994 between University of Kentucky's College of Engineering and Toyota Kentucky, trains businesses, organizations, and industry leaders.

In 2024, Kentucky ranked #4 in the nation for cost of doing business.\*

Kentucky's labor costs are 18% below the U.S. average.\*\*

Industrial electricity rates in Kentucky are the lowest east of the Mississippi, and some of the lowest in the country.

\*CNBC's America's Top States for Business study, 2024

\*\*Jobs EQ. Data as of 2024Q1

## SUCCESS STORY

For over 25 years, Webasto has thrived in Lexington's Blue Grass Business Park, expanding multiple times, adding hundreds of jobs and significant investments. Our success stems from the region's dedicated workforce, strategic location for efficient distribution, and a culture of innovation fostered by the supportive community and government. With a commitment to quality and customer satisfaction, we are grateful to contribute to Lexington's dynamic business environment.



**Webasto**

**Dominic Mussbach**  
Plant Manager  
**Webasto**






## HERE'S OUR PROOF

**Kentucky is the No. 1 state per capita in automotive production.**

—Kentucky Cabinet for Economic Development

Learn more at [locateinlex.com](http://locateinlex.com)

## Logistics

-  Connected to more than **2/3rd of population** via I-64 and I-75
-  **389** destinations within one stop of LEX
-  **100+ daily flights** from within an hour using LEX, CVG, and SDF
-  Lexington's UPS Ground Hub delivers to **90% of U.S. zip codes** within 3 days
-  Within **75 miles** of a UPS cold storage facility and overnight worldwide delivery



Scan the QR Code to view available sites and buildings at the **Greater LEX Property Database**.

The **Advanced Manufacturing Technician Program (AMT)** is a two-year (five semesters) Associate Degree that combines cutting-edge curriculum and paid working experience along with learning highly sought-after business principles and best practices of world-class manufacturers.



## Employment and Average Annual Wage

FOOD, BEVERAGE, AND TEXTILE MANUFACTURING **5,133** **\$54,600**  
Employment Average Annual Wage

MATERIALS MANUFACTURING **8,751** **\$65,800**  
Employment Average Annual Wage

FINISHED PRODUCT MANUFACTURING **29,809** **\$81,000**  
Employment Average Annual Wage

Source: JobsEQ, Data as of 2024Q1

## Talent Pipeline to the Manufacturing Industry

SCHOOL	TYPE	PATHWAYS	GRADUATES 2022-2023	ENROLLMENT 2023-2024
Bluegrass Community & Technical College	2 years	14	1,359	855
University of Kentucky	4 years +	17	749	2,788
Eastern Kentucky University	4 years +	6	181	522



Scan the QR Code to view a full listing of advanced manufacturing degrees.

## Cost of Living

MSA	COLI	Average Annual Salary	Purchasing Power
Lexington	92.0	\$60,676	\$65,953
Raleigh-Durham	98.3	\$70,260	\$71,475
Philadelphia	107.8	\$74,389	\$69,004
Chicago	111.1	\$75,925	\$68,336
Seattle	130.6	\$104,600	\$80,102
Boston	138.1	\$96,334	\$69,757
NYC	142.1	\$92,879	\$65,380
Washington, D.C.	143.2	\$92,320	\$64,470
Los Angeles	150.7	\$78,588	\$52,143
San Francisco	151.4	\$125,098	\$82,615

Source: C2ER, Cost of Living Index, Annual Averages 2023

### Did you know?

Kentucky offers an abundance of raw materials, exporting \$342 million in aluminum; more than \$500 million in iron and steel; and \$564 million in rubber and plastics in 2022.

Source: Kentucky Cabinet for Economic Development

## WORKFORCE

**Kentucky employs 6,400+ in 45 steel and iron production companies.**

—Kentucky Cabinet for Economic Development

Learn more at [locateinlex.com](http://locateinlex.com)



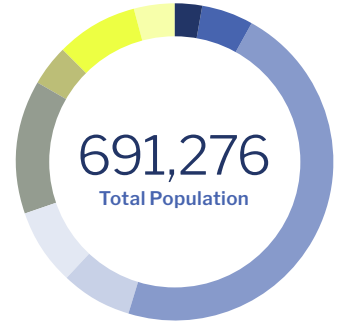
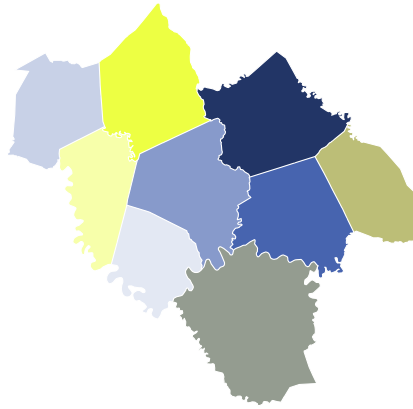
Kentucky's  
Bluegrass Region

# Greater Lexington Snapshot

## GREATER LEXINGTON REGION POPULATION

### County

■ Bourbon	20,174
■ Clark	37,004
■ Fayette	321,122
■ Franklin	51,563
■ Jessamine	53,792
■ Madison	94,064
■ Montgomery	28,271
■ Scott	58,269
■ Woodford	27,017
<b>Region</b>	<b>691,276</b>



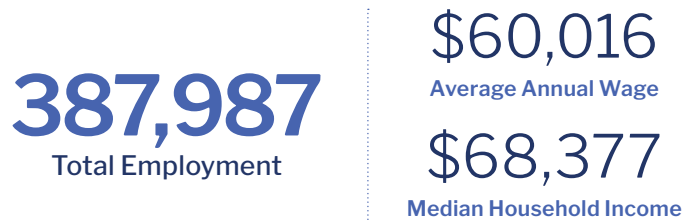
## EDUCATED WORKFORCE



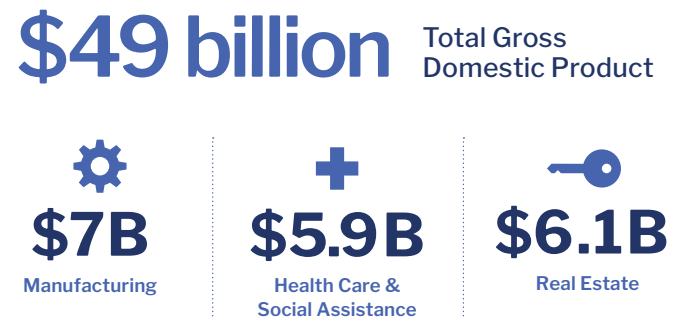
## INDUSTRY SECTORS



## EMPLOYMENT NUMBERS



## GROSS DOMESTIC PRODUCT



## HOUSING MARKET



Source: JobsEQ, American Community Survey 2023



Economic Development  
330 East Main Street, Suite 205  
Lexington, KY 40507

**Gina Greathouse**  
Executive Vice President,  
Economic Development  
859-226-1623  
ggreathouse@commercelexington.com

**Niki Goldey**  
Director of New Business,  
Economic Development  
859-226-1622  
ngoldey@commercelexington.com

