

# Project Wave

Lexington, KY

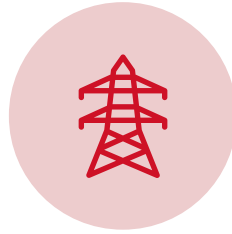
3/27/23



# Items to Cover



PROJECT  
OVERVIEW



ELECTRIC  
INFRASTRUCTURE



SERVICE OPTIONS



BILLING AND  
RATES



GENERATION MIX



RENEWABLE  
OFFERINGS

# LG&E and KU Overview

**Louisville Gas and Electric Company** and **Kentucky Utilities Company**, part of the **PPL Corporation** (NYSE: PPL) family of companies, are regulated utilities that serve more than 1.3 million customers across more than 90 counties and have consistently ranked among the best companies for customer service in the United States. LG&E serves 329,000 natural gas and 418,000 electric customers in Louisville and 16 surrounding counties. KU serves 558,000 electric customers in 77 Kentucky counties and five counties in Virginia.

- Headquartered in Louisville, Ky.
- Vertically integrated utilities serving 2/3 of counties in Kentucky
- Small customer base in Virginia
- More than 1.3 million customers
- 7,561 MW of regulated generation

## *Key strengths*

- Continuous best-in-class customer satisfaction ratings of all Midwest-utilities
- Highly ranked among all U.S. utilities for efficiency through operational focus
- Leading utility in Kentucky — with a stable regulatory environment, steady demand growth, and reasonable returns on regulated assets

## *Our commitment*

As a vertically integrated (generation, transmission, distribution), investor-owned utility, we possess the talent and know-how to help the project operate confidently and profitably. Through every phase of development, our team of more than 3,600 engineers and professionals will be planning and executing in order to be on time and budget to suit the needs of a project.

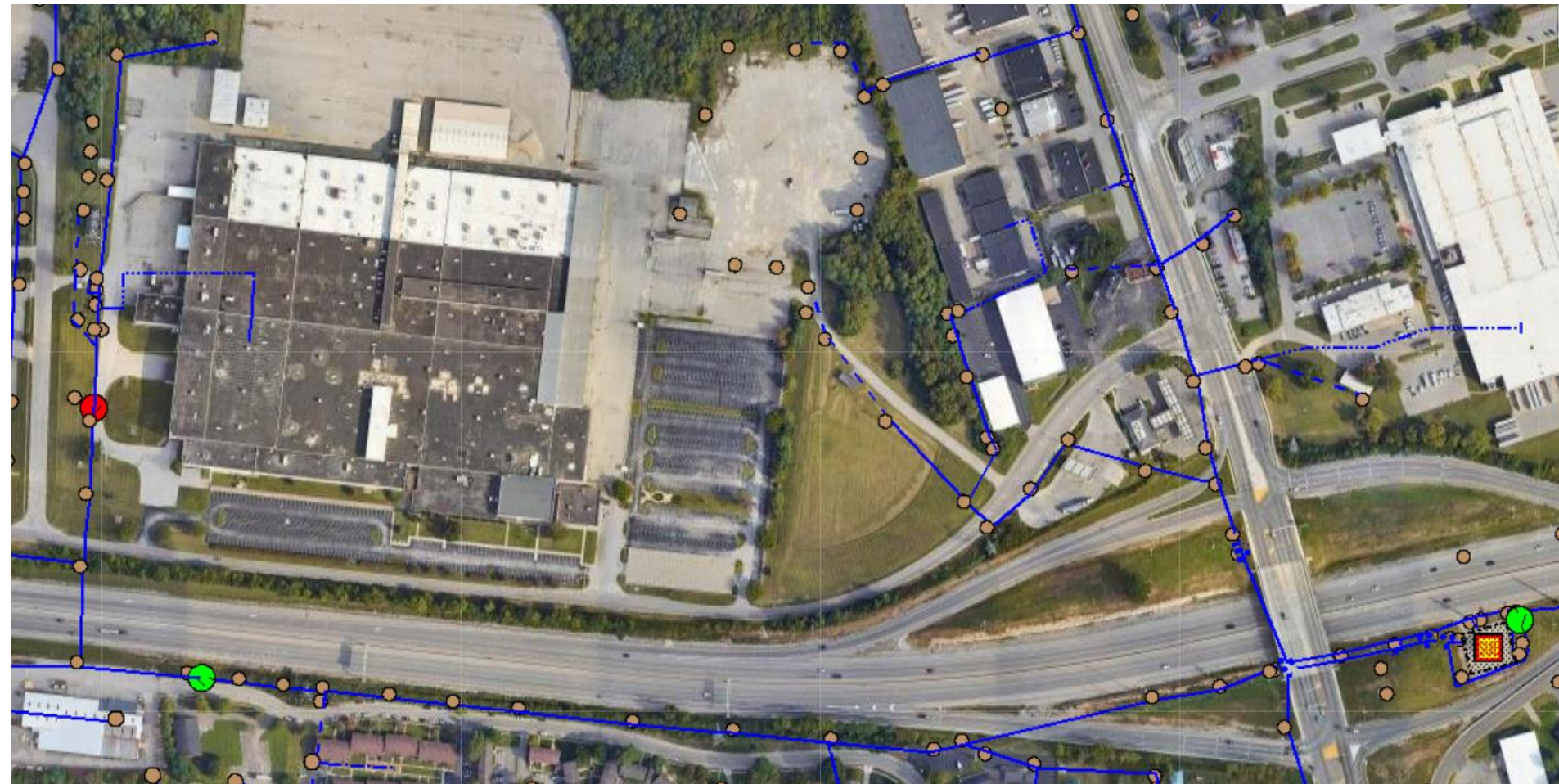
# Project Wave

Our proud history serving Kentucky provides the foundational relationship for this project, which we understand is important to your company's future.

The employees of Louisville Gas & Electric (LG&E) and Kentucky Utilities (KU) are committed to this project. Our company leadership, including experts in Generation Planning, Fuels, Transmission, Distribution, and Economic Development will be part of your project team to optimize time-frames to deliver service and success.

Location Considered	1515 Mercer Rd
Electric Demand	Phase 1 - 12.5MW
Electric Usage	7,200,000 kWh/month
Load Factor	80%
Power Factor	90%

# Distribution Infrastructure for 1515 Mercer



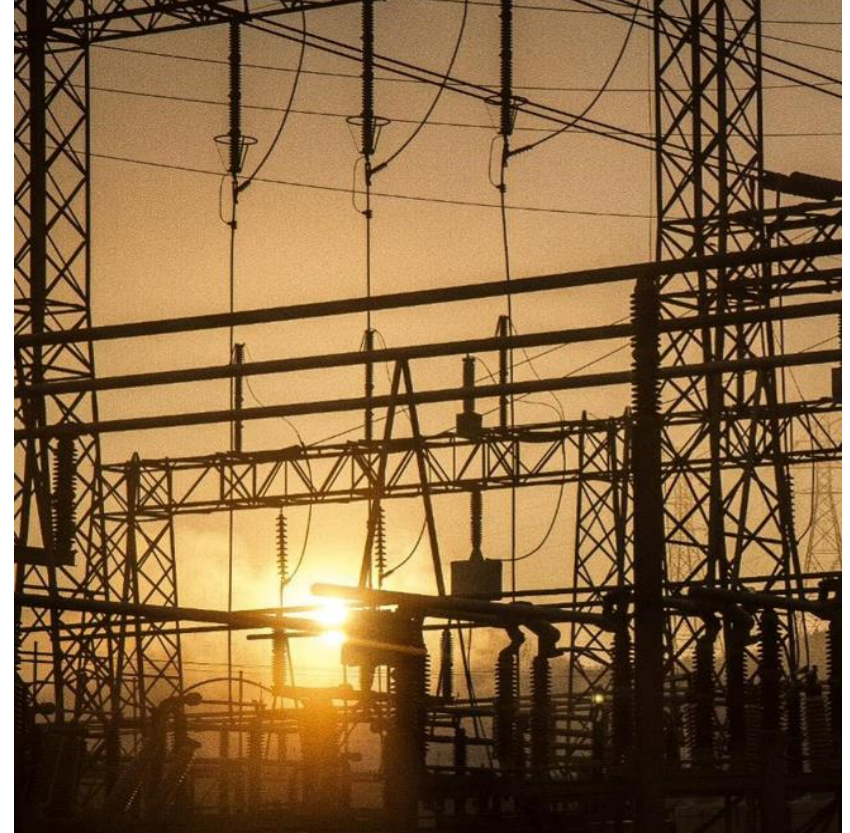
# Electric Billing Estimate

## Load Profile

Rate Schedule	KU-TODP
Monthly Peak Demand (kW)	12,500 kW
Monthly Usage (kWh)	7,200,000
Load Factor	80%
Power Factor	90%

**Estimated cost per kWh**  
**7.0¢**

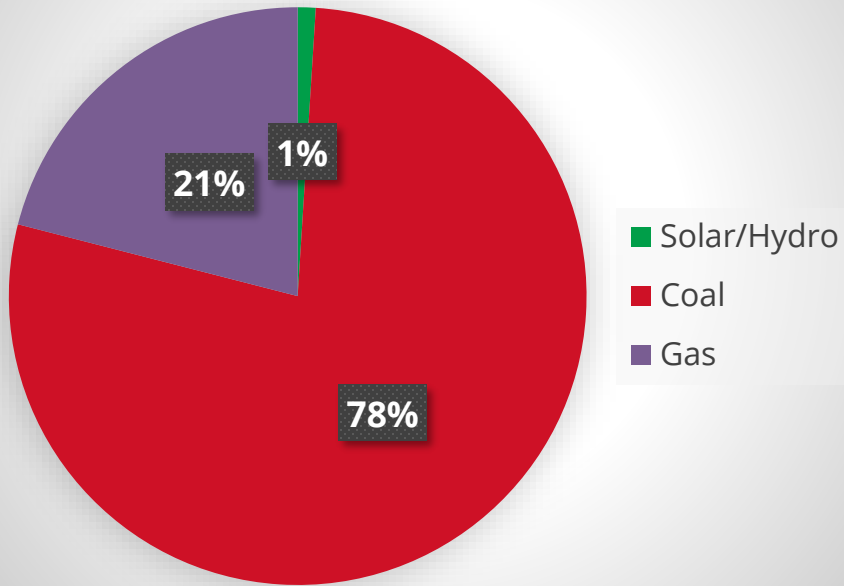
- Time of Day Primary
- Demands occur during peak times
- Power Factor at 90% or greater
- Estimate utilizing present tariffs
- Taxes not included



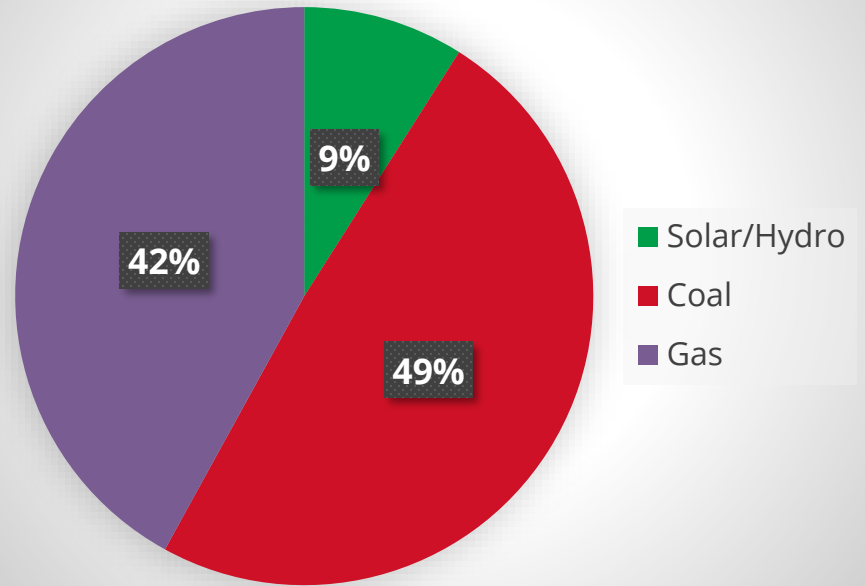
There are alternative tariffs that can be considered when load data and usage profiles are established.

# Generation Mix

2022



2030



# Green Energy Options

- **Business Solar:**

On-site sustainability as LG&E and KU will procure, build, own, maintain and operate each installation, resulting in minimal impact on operations.

- **Solar Share:**

Local sustainability with zero upfront costs and no maintenance required. Solar energy credits generated from the facility based on monthly subscription level.

- **Green Energy:**

- Regional sustainability (solar, wind, etc.) with zero upfront costs and no maintenance required.
- Purchase renewable energy certificates (RECs) that directly support the growth and long-term viability of regional renewable energy. Green-e certified.

- **EV Stations (hosted):**

- Electrification host for one or more charging stations. Digital display screens and quick-pay options provide a great customer experience.
- LG&E and KU own, operate and maintain stations for business customers wanting to offer EV charging to their customers and/or employees.



# LG&E-KU

## Key Accounts Team

- Experience with more than 400 energy intensive commercial and industrial customers.
- Supports national retail account customers (Kroger, Walmart, Target, Dollar General).
- Accounts comprise approximately \$950M billed revenue.
- 12 designated Account Managers for proactive customer outreach and support.

# Q&A/Next steps

